



HSITT™ Mk S, Mk S2

Naval targets

The High Speed Inflatable Towed Target (HSITT) Mk S and Mk S2 are derivatives of the original HSITT Mk I. The HSITT Mk S2 is a foam filled low cost, easily stowed, robust secondary towed target for training of helicopter door gunners and ship close-in-weapons systems.

This HSITT Maritime Surface Target, provided by QTS, is typically used by customers to represent Close Quarter threats to commercial shipping and Naval vessels and has been used to test the effectiveness and operational readiness of weapon systems including:

- Naval Guns/Close In Weapon Systems & Aircraft/Helicopter Cannons: Generically - Small Calibre (20mm-57mm), Medium Calibre (57mm-100mm) and Large Calibre Naval Guns (100mm - 127mm) Specifically - Phalanx, 25-30 Bushmaster, 40mm Bofors, 57mm Bofors Mk III, 76mm Oto Melara SRGM, 100mm Creusot Loire, 4.5" Royal Ordnance, and 127mm Oto Melara/FMV Guns

The main difference between this version and other versions of the HSITT family is that it is filled with special foam (patent pending) that will prevent it from sinking. The Mk S has identical dimensions to the Mk S2 however it is inflatable and is not foam filled.

Like all HSITTs, these versions can be utilised either as a towed secondary target or as a secondary/drift target (sea-anchored in place). Although the HSITT Mk S and Mk S2 were primarily designed to be towed by the Barracuda Unmanned Surface Vehicle - Target (USV-T) or the Hammerhead USV-T, it is also important to note that it can be towed astern of other naval or auxiliary vessel.

Key Features

Proven speed of 25 knots in Sea State 3

Easily towable

Low-cost and expandable

Patented skeg design for high stability

Foam filled design

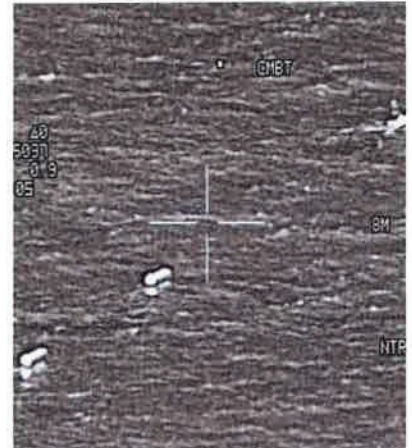
HSITT™ Mk S, Mk S2 Specifications

Physical (based on Mk S2)

Target Area	4m ² (44 ft ²)
Height	1.2m (4 ft)
Length	3.4m (11.2 ft)
Width	1.2m (4 ft)
Target Weight (Dry)	97 kg (214 lbs)
Colour	Black or Day-Glow Orange

Performance

Temperature	Operating: -30° to +50°C (-22° to +122°F) Storage: -40°C to +60°C (-40 to +140°F)
Towing speed (max)	Sea State 1: 35 knots Sea State 2: 30 knots Sea State 3: 25 knots Sea State 4: 20 knots Sea State 5: 15 knots
Tow lines available	91.4 m (300 ft)(standard) 400m (1312 ft) 600m (1968 ft) 2000m (6560 ft)
Towing vehicle	Navy Ship Auxiliary vessel
HSITT Kit Contents	HSITT Towed Target Tow Bridle Tow Line, 91.4m (300 ft) Tube Repair Kit Operation and Maintenance Handbook



Note: Due to continuous process improvements, specifications are subject to change without notice

For Further information please contact :

Anadrone Systems Private Limited
703, Emaar Capital Tower 1
M.G. Road, Sector 26, Gurugram – 122002, Haryana (India)
Tel.: +91 (124) 4207284 / 85 • Fax : +91 (124) 4207287
E-mail : info@anadrone.com
www.anadrone.com